

Introduced an integrative cancer treatment
system for the first time in Korea

G SAM INTERGRATIVE CANCER HOSPITAL

Providing multidisciplinary
and integrative medical services

Since. 2007

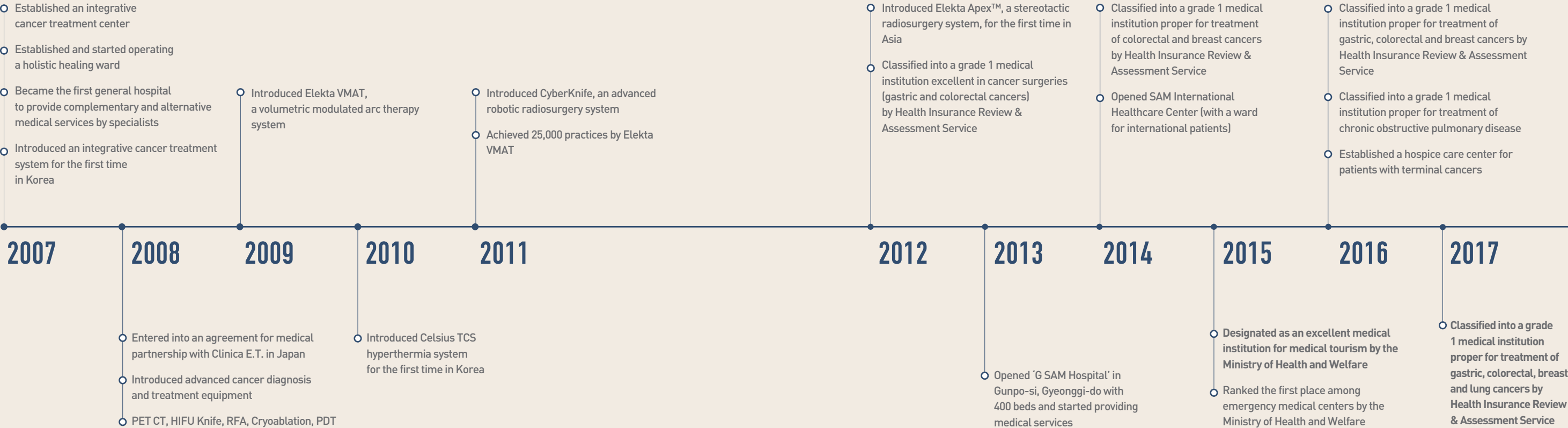


WEB. www.samhospital.com
TEL. +82-31-389-3862, 3865

History of G SAM Integrative Cancer Hospital

HISTORY

Since. 2007



Introduced an integrative cancer treatment system for the first time in Korea



01

Features in Cancer Treatment

by G SAM Integrative Cancer Hospital

G SAM Integrative Cancer Hospital

"Providing multidisciplinary
and integrative medical services"

Since 2007

30-minute interviews for new patients

Directly attack cancers

(Standard cancer treatment+ local cancer treatment
+ advanced cancer treatment)

Multidisciplinary and integrative treatment

Medical specialists in hemato-oncology and surgical oncology, surgery, radiation oncology, diagnostic imaging, nuclear medicine, pathology, Korean medicine, and supplementary and alternative medicine along with pastoral caregivers provide multidisciplinary and integrative medical services.

30-minute interviews with new patients

We guarantee interviews with new patients for at least 30 minutes to fully understand their conditions and provide optimized medical services.

Individualized treatment with multidisciplinary and integrative cancer conferences

Medical specialists in each area gather together in regular conferences twice a week to discuss individual cases of different patients and design treatment directions optimized for each of them.

Direct attack on cancers with 3 standard cancer treatment practices

Clinical specialists with the best expertise and skills provide care and treatment services for individual patients with 3 standard practices of surgery, chemotherapy and radiotherapy,

Increase effect for local cancer treatment

Our specialized local cancer treatment (ET, LHIPEC, HIFU Knife, RFA, PDT, Cryoablation, Brachytherapy) minimize damages and maximize effect.

Multidisciplinary and integrative cancer conference

Facilitating self-recovery by enhanced immunity

(Immunotherapy + exercise rehabilitation
+ holistic healing)

Adopt of advanced cancer treatment practices throughout the world

We are active in adapting and examining advanced cancer treatment practices throughout the world and apply them to our treatment practices in such a way that helps patients

⊕ ET, CRS+HIPEC, LHIPEC, SB injection

Enhance immunity for self-recovery

We try to minimize damages to other parts of the body while curing cancers and take advantage of immunotherapy with its effect verified to help patients in enhancing immunity, preventing cancer cells from proliferation and reducing them

⊕ hyperthermia, hyperbaric oxygen therapy, cell-mediated immunotherapy, vitamin C injection, mistletoe injection

Increase effect for cancer treatment by exercise rehabilitation

Light exercise helps patients recovering from surgery.

We provide a variety of exercise programs so that patients can continue light exercise during their cancer treatment

⊕ total care programs for cancer rehabilitation, healthy rehabilitation exercise, manna circulation exercise, shalom yoga class

Focus on holistic healing beyond diseases

SAM Hospital aims at medical services that take a look into people with holistic aspect. We are not just committed to passive medical services for diseases but dedicated to identify their causes and progress and provide both external treatment and internal healing as a holistic medical activity

⊕ art therapy for mental care, spiritual healing, counseling therapy.

02

Reasons to Select G SAM

Integrative Cancer Hospital for Your Cancer Surgery

Minimizing the recurrence and metastasis of cancers through pre-surgery treatment programs

Pre-surgery chemo treatment or radiotherapy increases the probability of surgical success and, in particular, prevents breast, rectal and pancreatic cancer cells from spreading during surgery while reducing their recurrence rates.

Providing surgical practices optimized for individual patients through medical teams specialized in each cancer and cancer information training

We have medical teams specialized in each cancer and continue to investigate advanced medical practices through weekly integrative conferences so that we can apply treatment practices optimized for individual patients.

Reducing the recurrence rates by using the tissue immune score

We examine tissue immune scores for the first time in Korea and apply them to cancer treatment in order to minimize the recurrence rates. Tissue immune scores are based on the measurement of values related to 4 different immune-related cells in cancer tissues allowing us to predict the progress in a more accurate manner than the existing staging systems.

All the surgeries performed by two medical specialists

Cancer surgeries in SAM Hospital are performed by teams consisting of medical specialists with work experience verified in the most renowned hospitals in Korea. All the surgeries are performed by two of them to ensure the quality of surgical treatment. We have also established a network of cooperation with the best university hospitals in Korea to seek for their assistance in the most advanced surgeries where necessary.

Facilitating fast recovery from surgery by enhancing immunity

We apply various supplementary and alternative therapies and Korean medicine through post-surgery recovery clinic to improve immunity. We also provide natural lifestyle habit based therapies such as diet therapy, exercise therapy and art therapy for mental care along with the most advanced hyperthermia and cytotherapy to improve immunity of patients and facilitate their fast recovery.



Specialized Medical Centers in G SAM Integrative Cancer Hospital

-
- 08 Gastric Cancer Center
 - 10 Colorectal Cancer Center
 - 12 Hepatobiliary-Pancreatic Cancer Center
 - 14 Lung & Esophageal Cancer Center
 - 16 Breast & Thyroid Cancer Center
 - 18 Gynecologic Cancer Center
 - 20 Urological Cancer Center
 - 22 Head & Neck Cancer Center
 - 24 Peritoneal Cancer Center
 - 26 Radio & Oncology Center
 - 28 Interventional Radiology Center
 - 30 Nuclear Medicine Center
-



**Grade 1
Medical Institution**

For the Surgery of Gastric Cancer
by Health Insurance Review
& Assessment Service

For 2 Consecutive Years

Gastric Cancer Center

Two types of blood vessels deliver oxygen and nutrients to liver tissues. The first vessel is the portal vein that roams between small and large intestines and the other one is the hepatic artery that directly comes out of the main artery. Normal liver tissues acquire the blood from the portal vein whereas the tumor tissues get the blood from the hepatic artery. Thus, selective injection of chemo medicine into the hepatic artery followed by blocking may lead to necrosis of tumors while minimizing damages to normal liver tissues. This therapy does not have limitation due to the progress of cancer and therefore has a wide range of applicability as long as patients do not suffer from severe jaundice or ascites. Patients need a week of hospitalization for one single treatment and may suffer from side effects such as abdominal pain, nausea, loss of appetite and fever. However, they will be relieved within a few days. This therapy has fewer limitations on its subjects and more benefits unlike other ones and therefore becomes increasingly popular in treatment of liver cancer.

Cancer Treatment System	<ul style="list-style-type: none">• Multidisciplinary treatment practices among various departments of surgery, hemato-oncology, gastrointestinal internal medicine, radiotherapy and oncology, radiology, and pathology• Individualized chemo therapy, radiotherapy and immunotherapy• Chemo therapy to prevent recurrence after the surgery and conservative chemo therapy for patients with metastasized or recurrence cancers.• Chemo therapy to prevent recurrence after the surgery and conservative chemo therapy for patients with metastasized or recurrence cancers.
Diagnosis and Treatment	<ul style="list-style-type: none">• We prevent and cure gastric cancer in early stages without open surgery!• “ESD (endoscopic submucosal dissection) for gastric cancer in early stages, minimally invasive laparoscopic gastrectomy”• Laparotomy, GIST (gastrointestinal stromal tumor) treatment
Specialized Treatment and Research	Providing innovative alternative treatment against peritoneal cancer through laparoscopic hyperthermic intraperitoneal chemotherapy (LHIPEC) and endovascular treatment (ET)

MEDICAL TEAM



Kim Seong-jin
Doctor of Surgery
(Director of the Gastric Cancer Center)



Jeong Hyeon-sik
Doctor of Hemato-oncology



Gwak Hee-won
Doctor of Gastrointestinal Internal Medicine

Gastric Cancer Center

Specialized Areas
gastric cancer, gastrointestinal cancer, gallstone, hernia, peritoneal cancer

Educational Background	Educational Background: graduated from College of Medicine, Kosin University Kusatu General Hospital (President MD, PhD, Yutaka Yonemura)
Work Experience	working as a doctor of surgery of G SAM Hospital, served as a doctor of surgery of Anyang SAM Hospital, doctor of surgery of Sahmyook Medical Center, full-time doctor in surgery (gastric cancer) at Korea Cancer Center Hospital, surgical resident of Korea Cancer Center Hospital, studied peritoneal cancer of Kusatsu General Hospital in Japan (President MD, PhD, Yutaka Yonemura)
Professional Activities	life member of the Korean Gastric Cancer Association, life member of the Korean Surgical Society, member of the Korean Society of Surgical Oncology, member of the Korean Society of Endoscopic & Laparoscopic Surgeons

Hemato-oncology

Specialized Areas
gastric cancer, pancreatic cancer

Educational Background	obtained master’s and doctor’s degrees at School of Medicine, Chung-Ang University, graduated from College of Medicine, Chung-Ang University
Work Experience	working as a doctor of hemato-oncology of G SAM Hospital, serving as a director of the hospice center of G SAM Hospital and a legislative director of Korea Hospice Association, served as a doctor of treatment at Pohang Sunlin Hospital, assistant professor of Sungkyunkwan University, doctor of hemato-oncology of Kangbuk Samsung Hospital, full-time doctor of hemato-oncology of Samsung Medical Center, surgical resident of Gachon University Gil Medical Center
Professional Activities	regular member of the Korean Cancer Association, received the Minister of Health and Welfare prize, published 30 medical articles

Gastrointestinal Internal Medicine

Specialized Areas
gastrointestinal diseases, liver, biliary and pancreatic diseases, colorectal diseases, gastrointestinal endoscopy, ESD & EMR for gastric cancer in early stages and colorectal adenomas, therapeutic endoscopy

Educational Background	obtained a doctor’s degree at College of Medicine, Korea University, obtained a master’s degree at School of Medicine, Chung-Ang University, graduated from College of Medicine, Chung-Ang University
Work Experience	working as a doctor of gastrointestinal internal medicine of G SAM Hospital, served as a full-time doctor of gastrointestinal internal medicine of the National Cancer Center, assistant/visiting professor of CHA Gangnam Medical Center, CHA University, doctor of the Gastrointestinal Center, Korea Medical Institute, researcher of the Department of Healthcare Service Innovation, Korea Health Industry Development Institute, resident at Chung-Ang University Hospital, internship at Chung-Ang University Hospital
Professional Activities	life member of the Korean Society of Gastroenterology, the Korean Society of Gastrointestinal Endoscopy, the Korean Association for the Study of Intestinal Diseases, the Korean Society of Neurogastroenterology and Motility, the Korean College of Helicobacter and Upper Gastrointestinal Research, and the Korean Association of Clinical Ultrasound, full member of the Korean Society of Gastrointestinal Cancer, received the President of the Korea Health Industry Development Institute prize, received the best foster presentation prize from the Korean College of Helicobacter and Upper Gastrointestinal Research, published a number of SCI-level articles

Department of Radiology and Oncology, Department of Interventional Radiology, Department of Surgical Oncology, Department of Radiology, Immunity Clinic, Department of Pathology, Department of Nuclear Medicine

MEDICAL TEAM

Surgery

Specialized Areas

colorectal cancers, benign anal diseases (hemorrhoids), hernia, minimally invasive surgery (laparoscopy), peritoneal cancer



Jeong Deok-hyeon

Doctor of Surgery
(Director of the Colorectal Cancer Center)

Educational Background graduated from College of Medicine, Hallym University, obtained a master's degree at College of Medicine, Yonsei University

Work Experience working as a doctor of surgery at G SAM Hospital, served as a doctor of surgery of Seoul Red Cross Hospital, assistant professor of clinical research of the Division of Colorectal Surgery, Department of Surgery, Severance Hospital, surgical resident at Hallym University Medical Center (Gangdong), internship at Hallym University Medical Center (Chuncheon), studied peritoneal cancer at Kusatsu General Hospital in Japan (President MD, PhD, Yutaka Yonemura)

Professional Activities life member of the Korean Surgical Society and the Korean Society for Coloproctology, full member of the Korean Society of Surgical Oncology, member of the Korean Society of Endoscopic & Laparoscopic Surgeons and the Korean Society for Parenteral and Enteral Nutrition, published 10 medical articles on domestic and international journals

Hemato-oncology

Specialized Areas

olorectal cancer, esophageal cancer, urological cancer, head and neck cancer, GIST, small intestine cancer, central nervous system tumors



Lee Hong-gi

Doctor of Hemato-oncology

Educational Background graduated from College of Medicine, Inje University, studied at School of Medicine, Inje University

Work Experience working as a doctor of hemato-oncology of G SAM Hospital, served as a doctor of hemato-oncology of Anyang SAM Hospital, assistant professor of hemato-oncology of Inje University Seoul Paik Hospital, full-time doctor of hemato-oncology of the National Cancer Center, doctor of internal medicine of Veterans Hospital, resident in internal medicine at Inje University Busan Paik Hospital, internship at Inje University Busan Paik Hospital

Gastrointestinal Internal Medicine

Specialized Areas

gastrointestinal diseases, liver, biliary and pancreatic diseases, colorectal diseases, gastrointestinal endoscopy, ESD & EMR for gastric cancer in early stages and colorectal adenomas, therapeutic endoscopy



Gwak Hee-won

Doctor of Gastrointestinal Internal Medicine

Educational Background obtained a doctor's degree at College of Medicine, Korea University, obtained a master's degree at School of Medicine, Chung-Ang University, graduated from College of Medicine, Chung-Ang University

Work Experience working as a doctor of gastrointestinal internal medicine of G SAM Hospital, served as a full-time doctor of gastrointestinal internal medicine of the National Cancer Center, assistant/visiting professor of CHA Gangnam Medical Center, CHA University, doctor of the Gastrointestinal Center, Korea Medical Institute, researcher of the Department of Healthcare Service Innovation, Korea Health Industry Development Institute, resident at Chung-Ang University Hospital, internship at Chung-Ang University Hospital

Professional Activities life member of the Korean Society of Gastroenterology, the Korean Society of Gastrointestinal Endoscopy, the Korean Association for the Study of Intestinal Diseases, the Korean Society of Neurogastroenterology and Motility, the Korean College of Helicobacter and Upper Gastrointestinal Research, and the Korean Association of Clinical Ultrasound, full member of the Korean Society of Gastrointestinal Cancer, received the President of the Korea Health Industry Development Institute prize, received the best foster presentation prize from the Korean College of Helicobacter and Upper Gastrointestinal Research, published a number of SCI-level articles

Colorectal Cancer Center

Large intestine is divided into appendix, colon, rectum and anal tube. Colon is divided into ascending colon, transverse colon, descending colon and sigmoid colon. Colorectal cancer refers to malignant tumors developing in appendix, colon and rectum. Most of those colorectal cancers are adenocarcinoma occurring in glandular cells of mucous membranes along with protopathic types including lymphoma, malignant carcinoid and leiomyosarcoma.

Treatment for colorectal cancer depends not on the size of tumors but on their levels of penetration into tissues. Some of those in early stages may be available for endoscopic treatment but they usually require surgeries together with chemotherapy or radiotherapy. Colorectal Cancer Center provides multidisciplinary and integrative treatment practices in close cooperation with medical specialists in their own areas in order to care for not only physical diseases but also mental pain.

"Grade 1 Medical Institution for the Surgery of Colorectal Cancer by Health Insurance Review & Assessment Service"

Cancer Treatment System

- Multidisciplinary treatment practices among various departments of surgery, hemato-oncology, gastrointestinal internal medicine, radiotherapy and oncology, radiology, and pathology
- Individualized chemo treatment, radiotherapy and immunotherapy
- Chemo treatment to prevent recurrence after the surgery and conservative chemo treatment for patients with metastasized or recurrence cancers.
- Holistic healing programs after the surgery or during the treatment

Diagnosis and Treatment

Endoscopic treatment for colorectal cancer in early stages, minimally invasive laparoscopy, CRS + HIPEC surgery against peritoneal cancer

Specialized Treatment and Research

- Providing innovative alternative treatment against peritoneal cancer through laparoscopic hyperthermic intraperitoneal chemotherapy (LHIPEC) and endovascular treatment (ET)
- Targeted cancer therapies
- Aiming at increased treatment performance by actively introducing the most advanced treatment practices from other countries

Department of Radiology and Oncology, Department of Interventional Radiology, Department of Surgical Oncology, Department of Radiology, Immunity Clinic, Department of Pathology, Department of Nuclear Medicine



Hepatobiliary-Pancreatic Cancer Center

Hepatobiliary-Pancreatic Cancer Center diagnoses cancers developing in liver, gallbladder and pancreas, perform surgeries, chemotherapy and radiotherapy. The center covers liver, biliary tract, gallbladder and pancreatic cancers. Liver, gallbladder and pancreas are organs with a high level of functional and structural complexity in human body and therefore treatment of cancers developing in those organs requires accurate examination followed by individualized treatment practices. Hepatobiliary-Pancreatic Cancer Center uses a variety of examination methods such as ultrasound, CT and ERCP (endoscopic retrograde cholangiopancreatography) for diagnosis and treatment of cancers developing in liver, gallbladder, pancreas and surrounding organs. The center also has medical specialists with sufficient clinical experience in various areas covering hemato-oncology, surgery, radiology, nuclear medicine, radiology and oncology, and integrative immunity clinic and they are committed to organized medical cooperation so that they can improve the quality of life for patients.

Cancer Treatment System

- Multidisciplinary treatment practices among various departments of surgery, hemato-oncology, gastrointestinal internal medicine, radiotherapy and oncology, radiology, and pathology
- Individualized chemo therapy, radiotherapy and immunotherapy
- Holistic healing progra ms after the surgery or during the treatment

Diagnosis and Treatment

- Combination of surgical resection by surgeons and RFA (radiofrequency ablation), TACE (transcatheter arterial chemoembolization), cryoablation and chemotherapy by medical specialists in interventional radiology taking into account conditions of patients
- MRCP (magnetic resonance cholangiopancreatography), ERCP (endoscopic retrograde cholangiopancreatography), EUS (endoscopic ultrasound) based diagnosis and surgeries along with chemotherapy, radiotherapy and endoscopic biliary drainage against biliary and pancreatic cancer

Specialized Treatment and Research

Targeted chemo therapy against liver cancer
Clinical research on chemo cellular immunotherapy

MEDICAL TEAM



Oh Gi-bong
Doctor of Surgery (Director of the Hepatobiliary-Pancreatic Cancer Center)

Surgery

- 📍 **Specialized Areas**
hepatobiliary-pancreatic and liver transplantation, coloanal anastomosis, vascular surgeries, peritoneal cancer

Educational Background	graduated from College of Medicine, Hanyang University, obtained master's and doctor's degrees at School of Medicine, University of Ulsan
Work Experience	working as a doctor of surgery of G SAM Hospital, served as a doctor of surgery of Anyang SAM Hospital, doctor of hepatobiliary-pancreatic surgery of Cheju Halla General Hospital, full-time doctor of liver transplantation and hepatobiliary-pancreatic surgery of Asan Medical Center, surgical resident at Asan Medical Center, studied peritoneal cancer a t Kishiwada Tokushukai Hospital & Kusatsu General Hospital (President MD, PhD, Yutaka Yonemura)
Professional Activities	life member of the Korean Surgical Society and the Korean Association of HBP Surgery, full member of the Korean Society for Transplantation, the Korean Association for the Study of the Liver and the Korean Liver Cancer Association

Hemato-oncology

- 📍 **Specialized Areas**
liver cancer, biliary tract cancer, pancreatic cancer, anemia, thrombocytopenia, myeloproliferative neoplasm, malignant lymphoma, myelodysplastic syndrome, leukemia

Educational Background	graduated from College of Medicine, Catholic University of Korea, completed the internal medicine course at School of Medicine, Catholic University of Korea
Work Experience	working as a doctor of hemato-oncology of G SAM Hospital, served as a clinical assistant professor of hematology of the St. Vincent's Hospital, Catholic University of Korea, clinical lecturer of the St. Vincent's Hospital, Catholic University of Korea, resident in internal medicine at the Catholic University of Korea
Professional Activities	full member of the Korean Liver Cancer Association, the Korean Association for Clinical Oncology, the Korean Society of Hematology and the Korean Society of Blood and Marrow Transplantation



Lee Bo-hee
Doctor of Hemato-oncology

Gastrointestinal Internal Medicine

- 📍 **Specialized Areas**
treatment for liver diseases (chronic hepatitis B, chronic hepatitis C, alcoholic and non-alcoholic liver diseases, hepatocirrhosis, liver cancer, gastrointestinal diseases, colorectal diseases, pancreato-biliary diseases, gastrointestinal and colorectal endoscopy

Educational Background	graduated from College of Medicine, Korea University, obtained a doctor's degree at School of Medicine, Korea University
Work Experience	working as a doctor of gastrointestinal internal medicine of G SAM Hospital, served as a doctor of gastrointestinal internal medicine of Anyang SAM Hospital, clinical lecturer of Korea University Guro Hospital, resident in internal medicine at Korea University Medical Center
Professional Activities	full member of the Korean Liver Cancer Association, medical specialist in gastrointestinal internal medicine of the Korean Association of Internal Medicine, medical specialist in gastrointestinal endoscopy of the Korean Society of Gastrointestinal Endoscopy



Lee Hyeon-jeong
Doctor in Gastrointestinal Internal Medicine

Department of Radiology and Oncology, Department of Interventional Radiology, Department of Surgical Oncology, Department of Radiology, Immunity Clinic, Department of Pathology, Department of Nuclear Medicine

MEDICAL TEAM

Surgery

Specialized Areas

lung and esophageal surgery, pleural diseases, thoracic injuries, venous diseases (varicose vein)

Educational Background

graduated from College of Medicine, Kyung Hee University, obtained master's and doctor's degrees at School of Medicine, Kyung Hee University

Work Experience

working as a doctor of cardiothoracic surgery of G SAM Hospital, served as an assistant professor of cardiothoracic surgery of Inje University Seoul Paik Hospital, assistant professor and associate professor of cardiothoracic surgery of Konkuk University Chungju Hospital, director of the emergency medical center of Konkuk University Chungju Hospital, full-time doctor of cardiothoracic surgery of Korea Cancer Center Hospital, resident at Kyung Hee University Medical Center

Professional Activities

medical specialist in cardiothoracic surgery, medical subspecialist in critical care medicine, published 20 medical articles including SCI-level ones on domestic and international journals



Hwang Eun-gu
Doctor of Cardiothoracic Surgery
(Director of the Lung & Esophageal Cancer Center)

Pulmonary Oncology

Specialized Areas

lung cancer, chronic cough, chronic obstructive pulmonary disease, asthma, tuberculosis

Educational Background

graduated from College of Medicine, Korea University

Work Experience

working as a doctor of pulmonology and oncology of G SAM Hospital, served as a doctor of pulmonology of Anyang SAM Hospital, medical planning director of G SAM Hospital, clinical assistant professor of pulmonology of Korea University Ansan Hospital, full-time doctor of pulmonology of Korea University Ansan Hospital, resident in internal medicine at Korean University Guro Hospital



Jeong Gi-hwan
Doctor of Pulmonary Oncology

Department of Radiology and Oncology, Department of Interventional Radiology, Department of Surgical Oncology, Department of Radiology, Immunity Clinic, Department of Pathology, Department of Nuclear Medicine

Lung & Esophageal Cancer Center

Lung & Esophageal Cancer Center was established to provide accurate diagnosis and optimized treatment against lung and esophageal cancers. Based on multidisciplinary and integrative treatment practices among medical specialists in different areas, the center applies individualized and optimized treatment practices covering surgeries, chemotherapy and radiotherapy. More than two-thirds of patients diagnosed with lung cancer also suffer from remote or local metastasis and therefore only 15% of them survive more than 5 years. We strive to improve the quality of life for patients with incurable or recurrence lung cancer by relieving their symptoms through local treatment.

Cancer Treatment System

- Multidisciplinary treatment practices among various departments of cardiothoracic surgery, pulmonology and oncology, radiotherapy and oncology, radiology and pathology
- Individualized chemo therapy, radiotherapy and immunotherapy
- Holistic healing programs after the surgery or during the treatment

Diagnosis and Treatment

- Surgeries by medical specialist with sufficient clinical experience in cardiothoracic surgery against lung and esophageal cancers
- Minimally invasive surgeries by bronchoscopy and thoracoscopy
- Partnership with Lung Cancer Center, Korea Cancer Center Hospital for medical cooperation

Specialized Treatment and Research

- Providing laparoscopic hyperthermic intraperitoneal chemotherapy (LHIPEC) and endovascular treatment (ET) against fine cancer tissues metastasized to the thoracic cavity
- Clinical research on chemo cellular immunotherapy



MEDICAL TEAM

Breast and Thyroid Surgery

Specialized Areas

benign breast diseases, breast cancer, benign thyroid diseases, thyroid cancer, general surgery

Educational Background	graduated from College of Medicine, Yonsei University, obtained master's and doctor's degrees at the Department of Medicine, Graduate School of Yonsei University
Work Experience	working as a doctor of breast and thyroid surgery of G SAM Hospital, assistant professor of clinical research of the Breast Cancer Center, Gangnam Severance Hospital, clinical lecturer of the Breast Cancer Center, Gangnam Severance Hospital, surgical resident at Gangnam Severance Hospital, internship at VHS Medical Center
Professional Activities	full member of the Korean Surgical Society and the Korean Breast Cancer Society, medical specialist recognized by the Korean Breast Cancer Society, medical sub-specialist in breast diseases, full member of the Korean Association of Thyroid and Endocrine Surgeons



Hwang Seung-hyeon
Doctor of Breast and Thyroid Surgery
(Director of the Breast & Thyroid Cancer Center)



Lee Ji-yeon
Doctor of Hemato-oncology



Byeon Eun-gyeong
Doctor of Endocrinology

Hemato-oncology

Specialized Areas

breast cancer, ovarian cancer, uterine cancer, cervical cancer, primary peritoneal cancer

Educational Background	graduated from College of Medicine, Ewha Womans University, and School of Medicine, Ewha Womans University
Work Experience	working as a doctor of hemato-oncology of G SAM Hospital, served as a doctor of hemato-oncology of Anyang SAM Hospital, clinical lecturer of Samsung Medical Center, doctor of SAM Women's Hospital, resident at Anyang SAM Hospital, internship at Anyang SAM Hospital

Endocrinology

Specialized Areas

thyroid diseases, diabetes, hyperlipidemia, pituitary diseases, osteoporosis, obesity

Educational Background	obtained master's and doctor's degrees at School of Medicine, Ewha Womans University
Work Experience	working as a doctor of endocrinology of G SAM Hospital, served as a doctor of endocrinology of Anyang SAM Hospital, full-time doctor of endocrinology of Ewha Womans University Mokdong Hospital, resident in internal medicine at Ewha Womans University Mokdong Hospital
Professional Activities	member of the Korean Endocrine Society and the Korean Diabetes Association

Department of Radiology and Oncology, Department of Interventional Radiology, Department of Surgical Oncology, Department of Radiology, Immunity Clinic, Department of Pathology, Department of Nuclear Medicine

Breast & Thyroid Cancer Center

Breast & Thyroid Cancer Center provides the most advanced treatment practices against not only various benign breast diseases such as breast pain, nipple discharge, breast lump, mastitis, mastitis and gynecomastia but also breast and thyroid cancers along with the basic examinations.

The center uses multidisciplinary approaches covering departments of surgery, radiology, radiotherapy and oncology, psychiatry and immunotherapy center to provide individualized treatment practices along with adjuvant chemotherapy, hormone therapy and targeted therapy after the surgery, and palliative therapies against metastatic breast cancer (stage 4). Patients can also access to counseling and treatment by their doctors to cope with issues and questions during the course of their treatment. In addition, not only patients but also their families can benefit from mental care and spiritual healing which is one of our core values.

Cancer Treatment System

- Multidisciplinary treatment practices among various departments of breast and thyroid surgery, hemato-oncology, endocrinology, radiology, radiotherapy and oncology, and pathology
- Surgeries by medical specialist with sufficient clinical experience in breast and thyroid cancers
- Individualized chemo therapy, radiotherapy and immunotherapy
- Application of the most advanced chemotherapy, targeted chemo therapy and antihormone therapy
- Chemo therapy to prevent recurrence after the surgery and conservative chemo therapy for patients with metastasized or recurrence cancers.
- Holistic healing programs after the surgery or during the treatment
- Proper care after the breast cancer surgery (hyperthermia, immunotherapy, mental care, diet therapy, etc.)

Diagnosis and Treatment

- Providing the most advanced and precise examinations based on breast MRI, mammotome, mammography and breast ultrasound and breast cancer surgeries while applying the most advanced chemotherapy, targeted treatment, radiotherapy and antihormone therapy with medical care for hereditary breast cancer
- Performing interventional radiological treatment practices such as precise examinations and radiofrequency ablation by the department of breast and thyroid surgery





Gynecologic Cancer Center

Gynecologic Cancer Center is a specialized one to provide multidisciplinary joint treatment practices against overall gynecologic cancers including cervical cancer, ovarian cancer and endometrial neoplasia for individualized medical practices. The center has a network of medical cooperation among medical specialists with years of clinical experience in different areas of gynecology, surgery, urology, hemato-oncology, and radiotherapy and oncology to ensure successful surgeries, chemotherapy and radiotherapy against gynecologic cancers and for organs damaged by those cancers.

Cancer Treatment System	<ul style="list-style-type: none">• Multidisciplinary treatment practices among various departments of gynecology, hemato-oncology, surgery, urology, radiotherapy and oncology, radiology, and pathology• Individualized chemo therapy, radiotherapy and immunotherapy• Chemo therapy to prevent recurrence after the surgery and conservative chemo therapy for patients with metastasized or recurrence cancers.• Holistic healing programs after the surgery or during the treatment
Diagnosis and Treatment	<ul style="list-style-type: none">• Minimally invasive laparoscopic surgery for gynecological cancer, minimally invasive laparoscopy (single port), treatment available for uterine fibroid, gynecological cancer and other gynecological diseases• Laparoscopic surgery for uterine fibroid, uterine artery embolization, high intensity focused ultrasound ablation• Selective care and treatment taking into account the conditions of patients, protection of their functionality and recurrence rates• Targeted chemo therapy
Specialized Treatment and Research	<ul style="list-style-type: none">• Providing innovative alternative treatment against peritoneal cancer through laparoscopic hyperthermic intraperitoneal chemotherapy (LHIPEC) and endovascular treatment (ET)• Radioactive Iodine therapy after the surgery

MEDICAL TEAM



Jeong Jin-hwa
Doctor of Gynecology
(Director of the Gynecologic Cancer Center)

Gynecology

Specialized Areas
gynecological cancer, laparoscopy, general gynecology, antepartum care, high risk pregnancy, menopausal disorders

Educational Background	graduated from College of Medicine, CHA University working as a doctor of gynecology of G SAM Hospital, served as a clinical lecturer of
Work Experience	gynecology of Chung-Ang University Hospital, resident at Anyang SAM Hospital, internship at Bundang CHA General Hospital



Kim Eun-gyeong
Doctor of Hemato-oncology

Hemato-oncology

Specialized Areas
care for international patients (International Healthcare Center), gynecological cancer, sarcoma, melanoma, skin cancer, thyroid cancer, peritoneal cancer, peritoneal mesothelioma, cancers with unknown origins

Educational Background	graduated from College of Medicine, Ewha Womans University, College of Medicine, University of Ulsan
Work Experience	working as a director of G SAM Hospital International Healthcare Center and doctor of hemato-oncology of G SAM Hospital, served as a president of Sungmo Hospital, doctor of internal medicine of Mungyeong Catholic Hospital, doctor of hemato-oncology of Hanil General Hospital, KEPCO Medical Center, full-time doctor of hemato-oncology of Asan Medical Center, resident in internal medicine at Asan Medical Center, internship at Asan Medical Center
Professional Activities	Professional Activities: full member of the Korean Association for Clinical Oncology



Gong In-hyeok
Doctor of Urology

Urology

Specialized Areas
urological tumors, calculus, prostatic hyperplasia, urinary incontinence, dysuria, andrology

Educational Background	graduated from School of Medicine, CHA University, master's course at CHA University
Work Experience	working as a doctor of urology of G SAM Hospital, served as a clinical lecturer of Samsung Medical Center, resident at Bundang CHA General Hospital, internship at Bundang CHA General Hospital
Professional Activities	full member of the Korean Urological Association, the Korean Urological Oncology Society, the Korean Prostate Society, the Korean Continence Society, the Korean Endourological Society, the Korean Society for Sexual Medicine and Andrology and the Korean Society for Urological Ultrasonography

Department of Radiology and Oncology, Department of Interventional Radiology, Department of Surgical Oncology, Department of Radiology, Immunity Clinic, Department of Pathology, Department of Nuclear Medicine



Urological Cancer Center

Urological Cancer Center is a specialized one for diagnosis and treatment of prostatic and urological cancers. The center has a network of medical cooperation with a variety of areas such as departments of urology, hemato-oncology, radiotherapy and oncology, radiology, and pathology that play a pivotal role in curing prostatic cancer and other urological tumors.

The center performs early diagnosis, radical surgeries, radiotherapy and joint treatment in cooperation with the department of hemato-oncology against renal, bladder and prostatic cancers and, in particular, introduced cryosurgery to ensure minimally invasive and radical treatment of prostatic cancer and conservative and radical treatment of renal cancer.

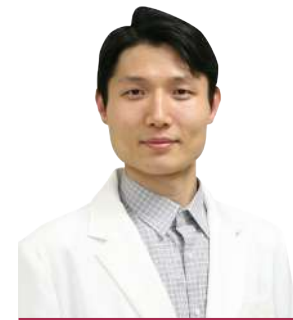
Cancer Treatment System

Multidisciplinary treatment practices among various departments of urology, surgery, hemato-oncology, radiotherapy and oncology, interventional radiology, and pathology
Individualized chemo therapy, radiotherapy and immunotherapy
Chemo therapy to prevent recurrence after the surgery and conservative chemo therapy for patients with metastasized or recurrence cancers.
Holistic healing programs after the surgery or during the treatment

Diagnosis and Treatment

Focusing on early diagnosis by PSA (prostate-specific antigen) test and transrectal ultrasonography, performing minimally invasive laparoscopic surgery, holmium laser prostate surgery, innovative ESWL (extracorporeal shock wave lithotripsy) against urinary stone, targeted chemo therapy and immunotherapy

MEDICAL TEAM



Gong In-hyeok
Doctor of Urology

Urology

Specialized Areas

urological tumors, calculus, prostatic hyperplasia, urinary incontinence, dysuria, andrology

Educational Background

graduated from School of Medicine, CHA University, master's course at CHA University

Work Experience

working as a doctor of urology of G SAM Hospital, served as a clinical lecturer of Samsung Medical Center, resident at Bundang CHA General Hospital, internship at Bundang CHA General Hospital

Professional Activities

full member of the Korean Urological Association, the Korean Urological Oncology Society, the Korean Prostate Society, the Korean Continence Society, the Korean Endourological Society, the Korean Society for Sexual Medicine and Andrology and the Korean Society for Urological Ultrasonography



Lee Hong-gi
Doctor of Hemato-oncology

Hemato-oncology

Specialized Areas

colorectal cancer, esophageal cancer, urological cancer, head and neck cancer, GIST, small intestine cancer, central nervous system tumors

Educational Background

Educational Background: graduated from College of Medicine, Inje University, studied at School of Medicine, Inje University

Work Experience

working as a doctor of hemato-oncology of G SAM Hospital, served as a doctor of hemato-oncology of Anyang SAM Hospital, assistant professor of hemato-oncology of Inje University Seoul Paik Hospital, full-time doctor of hemato-oncology of the National Cancer Center, doctor of internal medicine of Veterans Hospital, resident in internal medicine at Inje University Busan Paik Hospital, internship at Inje University Busan Paik Hospital

Department of Radiology and Oncology, Department of Interventional Radiology, Department of Surgical Oncology, Department of Radiology, Immunity Clinic, Department of Pathology, Department of Nuclear Medicine





Head & Neck Cancer Center

Head & Neck Cancer Center is a specialized one for diagnosis and treatment of oral cancer, laryngeal cancer, thyroid cancer and other special tumors and cancers developing in oral cavity, nasal cavity, larynx and esophagus, thyroid, parotid gland, submaxillary gland and other organs in head and neck. For head and neck cancers, surgeries should be the last option to protect and preserve functionality of faces or other organs and therefore chemotherapy and radiotherapy is recommended instead of surgeries. The center has introduced the most advanced robotic radiosurgery system called CyberKnife and other cutting-edge medical equipment to provide optimized cancer treatment practices.

Cancer Treatment System

- Joint treatment in close cooperation with medical specialists in the areas of otorhinolaryngology, endocrinology, hemato-oncology, radiotherapy and oncology, interventional radiology, and pathology
- Individualized chemotherapy, radiotherapy and immunotherapy
- Chemotherapy to prevent recurrence after the surgery and conservative chemotherapy for patients with metastasized or recurrence cancers.
- Holistic healing programs after the surgery or during the treatment

Diagnosis and Treatment

Performing fine surgeries against thyroid, head, neck and larynx tumors, treatment by CyberKnife, the 4th generation robotic radiosurgery system, rhinoplasty and snoring sleep apnea clinic, ringing and hearing loss clinic, paranasal cavity clinic, middle ear implant clinic, salivary gland diseases (parotid gland, submaxillary gland surgeries, sialolithiasis)

MEDICAL TEAM



Oh Jang-geun
Doctor of Otorhinolaryngology,
Head and Neck Surgery
(Director of the Head & Neck Cancer
Center)

Otorhinolaryngology, Head and Neck Surgery

Specialized Areas

thyroid, head and neck tumors, fine surgeries for larynx, rhinoplasty, snoring sleep apnea, middle ear implant, osteotomy hearing aid, endoscopic surgeries for paranasal cavity, surgeries for chronic otitis media, dizziness, ringing rehabilitation, salivary gland diseases (parotid gland, submaxillary gland surgeries, sialolithiasis)

Educational Background	graduated from College of Medicine, Hanyang University, obtained a master's degree at School of Medicine, Dankook University, obtained a doctor's degree at School of Medicine, Dankook University
Work Experience	Work Experience: working as a doctor of otorhinolaryngology, head and neck surgery of G SAM Hospital, served as a doctor of otorhinolaryngology of Cheongju St. Mary's Hospital, visiting professor of College of Medicine, Dankook University, full-time doctor of head and neck surgery of Dankook University Hospital, resident at Dankook University Hospital, internship at Hanyang University Seoul Hospital
Professional Activities	Professional Activities: life member of the Korean Academy of Facial Plastic and Reconstructive Surgery, full member of the Korean Rhinologic Society, the Korean Otolological Society, the Korean Thyroid Association, the Korean Society of Thyroid-Head and Neck Surgery and the Korean Society of Otorhinolaryngology-Head and Neck Surgeon, member of the Korean Balance Society



Lee Dae-hee
Doctor of Hemato-oncology

Hemato-oncology

Specialized Areas

head and neck cancer, liver cancer, biliary tract cancer, pancreatic cancer

Educational Background	graduated from College of Medicine, Seoul National University, obtained a master's degree at Medical MBA, School of Management, Kyung Hee University, graduated from Christ for the Nations Institute in the United States
Work Experience	serving as a president of Hyosan Medical Foundation, working as a doctor of hemato-oncology of G SAM Hospital, served as a doctor of hemato-oncology of G SAM Integrative Cancer Hospital, full-time doctor of hemato-oncology of the National Cancer Center Hospital, doctor of gastrointestinal internal medicine and pulmonology of Anyang SAM Hospital, internship in internal medicine (majored in gastrointestinal internal medicine) at Seoul National University Hospital, resident at Seoul National University Hospital
Professional Activities	full member of the Korean Association of Internal Medicine and the Korean Association for Clinical Oncology, associate member of the Korean Cancer Association and the Korean Cancer Study Group, adviser at the Korean Society of Integrative Oncology, selected as a Global CEO by Forbes Korea, medical specialist recognized by the Korea Geriatrics Society

Department of Radiology and Oncology, Department of Interventional Radiology, Department of Surgical Oncology, Department of Radiology, Immunity Clinic, Department of Pathology, Department of Nuclear Medicine



Peritoneal Cancer Center

Peritoneum refers to a thin layer surrounding various abdominal organs and walls. Cancers developing in this layer are either caused by metastasis from other organs or originated from the layer. This peritoneal cancer is known to be hardly incurable with worse prognosis. Since 2008, however, the center has performed CRS (cytoreductive surgery), HIPEC (hyperthermic intra-peritoneal chemotherapy), LHIPEC (laparoscopic hyperthermic intra-peritoneal chemotherapy) and other advanced treatment practices to give hope for patients.

CRS (cytoreductive surgery) + HIPEC (hyperthermic intra-peritoneal chemotherapy)

CRS is a surgery with a wide range to remove peritoneum and other organs subject to metastasis as much as possible not to risk the life of patients. It aims at reducing cancer tissues down to 2.5mm or smaller. After the surgery, hyperthermic intra-peritoneal chemotherapy is performed with the abdomen open. This mixes glucose solution with chemo medicine in the peritoneal cavity while maintaining the temperature between 42 and 43°C with treatment for about 1 hour. The chemo medicine directly contacts cancer cells to maximize its effect.

LHIPEC (laparoscopic hyperthermic intra-peritoneal chemotherapy)

In order to cure metastasis to peritoneum, LHIPEC uses laparoscopy to observe lesions in the peritoneal cavity and performs surgeries such as adhesiolysis, if necessary, unlike the existing surgical procedures that open the abdomen. The temperature is maintained between 42 and 43°C while the chemo medicine is injected into the peritoneal cavity and the treatment continues for about 1 hour. In particular, it is excellent in controlling ascites and therefore proper for improving symptoms where there are problems due to ascites. The center provides repetitive treatment for the first time in the world and reduction in metastasized nodes is observed in many cases.

MEDICAL TEAM



Lee Chae-yeong
Doctor of Surgical oncology,
Director of the Cancer Hospital
(Director of the Peritoneal Cancer Center)

Surgical oncology

Specialized Areas
peritoneal cancer, peritoneal metastasis, HIFU Knife, SB injection

Educational Background	graduated from College of Medicine, Chungnam National University, obtained a master's degree at School of Medicine Chungnam National University
Work Experience	working as a director of G SAM Integrative Cancer Hospital and doctor of surgical oncology of G SAM Hospital, served as a director of the integrative cancer center, Anyang SAM Hospital, doctor of surgery at Anyang SAM Hospital, medical specialist designated by Saemmul Hospice, Interserve Missionary, researcher of the Institute for Biblical Community Development, John Brown University, full-time doctor at Asan Medical Center (laparoscopy, trauma), surgical resident at Asan Medical Center
Professional Activities	full member of the Korean Surgical Society, the Korean Society of Endoscopic & Laparoscopic Surgeons, the Korean Society of Gastrointestinal Cancer and the Korean Society of Peritoneal Cancer ※Performed more than 800 LHIPEC surgeries since November, 2008 (99.5% of the success rate)

Surgery

Specialized Areas
hepatobiliary-pancreatic and liver transplantation, coloanal anastomosis, vascular surgeries, peritoneal cancer

Educational Background	graduated from College of Medicine, Hanyang University, obtained master's and doctor's degrees at School of Medicine, University of Ulsan
Work Experience	working as a doctor of surgery of G SAM Hospital, served as a doctor of surgery of Anyang SAM Hospital, doctor of hepatobiliary-pancreatic surgery of Cheju Halla General Hospital, full-time doctor of liver transplantation and hepatobiliary-pancreatic surgery of Asan Medical Center, surgical resident of Asan Medical Center, studied peritoneal cancer at Kishiwada Tokushukai Hospital & Kusatsu General Hospital (President MD, PhD, Yutaka Yonemura)
Professional Activities	life member of the Korean Surgical Society and the Korean Association of HBP Surgery, full member of the Korean Society for Transplantation, the Korean Association for the Study of the Liver and the Korean Liver Cancer Association

Surgery

Specialized Areas
colorectal cancers, benign anal diseases (hemorrhoids), hernia, minimally invasive surgery (laparoscopy), peritoneal cancer

Educational Background	graduated from College of Medicine, Hallym University, obtained a master's degree at College of Medicine, Yonsei University
Work Experience	working as a doctor of surgery of G SAM Hospital, served as a doctor of surgery of Seoul Red Cross Hospital, assistant professor of clinical research of the Division of Colorectal Surgery, Department of Surgery, Severance Hospital, surgical resident at Hallym University Medical Center (Gangdong), internship at Hallym University Medical Center (Chuncheon), studied peritoneal cancer at Kusatsu General Hospital in Japan (President MD, PhD, Yutaka Yonemura)
Professional Activities	life member of the Korean Surgical Society and the Korean Society for Coloproctology, full member of the Korean Society of Surgical Oncology, member of the Korean Society of Endoscopic & Laparoscopic Surgeons and the Korean Society for Parenteral and Enteral Nutrition, published 10 medical articles on domestic and international journals



Radio-oncology Center

Radiotherapy uses radiation of higher energy (photon or electron) than the existing ones used to diagnose various malignant tumors (cancer), some benign tumors and specific benign diseases in order to cure diseases developing in human body. Radiotherapy is one of the 3 common cancer treatment practices together with surgeries and chemotherapy and has been growing fast due to development in imaging and computing technology. Radio-oncology Center has secured the most advanced treatment systems and equipment to make patients and their families feel more comfortable during the treatment process.

Features	<ul style="list-style-type: none">• Operating the most advanced volumetric arc therapy systems (Elekta Infinity & Elekta Synergy)• Operating radiosurgery systems against brain tumors, lung cancer, metastatic spinal cancer (4th generation CyberKnife & Elekta Apex)• Suggesting a variety of radiotherapy practices by medical specialists in radiotherapy and oncology (diverse protocols and combined therapies after the radiotherapy)• Establishing accurate treatment plans by the renowned medical physicists Minimizing damages to normal cells, maximizing cancer treatment effect through a combination of hyperthermia, hyperbaric oxygen therapy and immunotherapy
Treatment Direction	The center performs radiotherapy to remove tumors effectively while protecting normal organs within the scope of treatment as much as possible through advanced equipment and a variety of treatment practices. In connection with spiritual counseling, rehabilitation exercise, music therapy and other activities, it also strives to make patients feel comfortable and easy during their treatment.
Treatment Methods	3D-Conformal Radiation Therapy IMRT (Intensity-Modulated Radiation Therapy) IGRT (Image Guided Radiation Therapy) VMAT (Volumetric Modulated Arc Therapy) CyberKnife (SRS; Stereotactic Radiosurgery)

MEDICAL TEAM



Lee Jeong-seok
Doctor of Radiotherapy and Oncology



Yu Eun-jeong
Doctor of Radiotherapy and Oncology



Choi Gyeong-sik
Physicist in Radiotherapy and Oncology (Medical Physicist)

Specialized Areas: radiotherapy

Specialized Areas
radiotherapy

Educational Background	graduated from College of Medicine, Hanyang University
Work Experience	working as a doctor of radiotherapy and oncology of G SAM Hospital, served as a director of the cancer center, Cheju Halla General Hospital, medical specialist of radiotherapy and oncology of the Catholic Medical Center, resident in radiotherapy and oncology at the Catholic University of Korea Seoul St. Mary's Hospital, resident in internal medicine at Korean Cancer Center Hospital
Professional Activities	full member of the Korean Society for Radiation Oncology and the Korean Cancer Association

Radiotherapy and Oncology

Specialized Areas
radiotherapy

Educational Background	graduated from College of Medicine, Chungbuk National University, obtained a doctor's degree at School of Medicine, Catholic University of Korea
Work Experience	working as a doctor of radiotherapy and oncology of G SAM Hospital, clinical assistant professor of the Catholic University of Korea Uijeongbu St. Mary's Hospital, clinical lecturer of the Catholic University of Korea Incheon St. Mary's Hospital, resident at the Catholic Medical Center, internship at Gachon University Gil Medical Center

Radiotherapy and Oncology

Specialized Areas
radiotherapy

Educational Background	majored in medical physics at College of Medicine, Catholic University of Korea
Work Experience	working as a medical physicist of G SAM Hospital, served as a medical physicist of G SAM Integrative Cancer Hospital, research lecturer of radiotherapy and oncology of Ajou University Hospital
Professional Activities	full member of the Korean Society of Radiation Surgery and Physics and the Korean Society of Medical Physics

Department of Radiology and Oncology, Department of Interventional Radiology, Department of Surgical Oncology, Department of Radiology, Immunity Clinic, Department of Pathology, Department of Nuclear Medicine

MEDICAL TEAM

Interventional Radiology

Specialized Areas
interventional radiology, RFA, cryoablation



Nam Deok-ho
Doctor of Interventional Radiology
(Director of the Interventional Radiology Center)

Educational Background	graduated from College of Medicine, Kyung Hee University, obtained a doctor's degree at School of Medicine, Soonchunhyang University
Work Experience	working as a doctor of n interventional radiology and medical planning director of G SAM Hospital, served as an associate professor of radiology of Kyung Hee University Healthcare System, assistant professor of radiology of Soonchunhyang University Hospital Cheonan, treatment doctor of radiology of Anyang SAM Hospital, clinical lecturer of radiology of Asan Medical Center, internship and resident at Kyung Hee University Medical Center
Professional Activities	Korean Society of Radiology, Korean Society of Interventional Radiology, Society of Gastrointestinal Intervention
Listed on 2016 Marquis Who's Who in the World: 'Safety and Validity of Ultrasound Induced Femoral Arterial Puncture', published a number of medical articles including 'Roles of Liver and Pancreas in Nutcracker Syndrome (disease with pain from the compression of the left renal vein between the abdominal aorta and superior mesenteric artery)', SCI-level and SCIE-level ones on domestic and international journals	

Interventional Radiology

Specialized Areas
interventional radiology, RFA, cryoablation



Jeon Yong-sik
Doctor of Interventional Radiology

Educational Background	graduated from College of Medicine, Konyang University, obtained a master's degree at School of Medicine, Konyang University
Work Experience	working as a doctor of interventional radiology of G SAM Hospital, served as a clinical lecturer of radiology of Seoul National University Hospital, full-time doctor of radiology of Seoul National University Hospital, resident in radiology at Konyang University Hospital
Professional Activities	financial director of the Korean Society of Image-guided Tumor Ablation, full member of the Korean Society of Interventional Radiology and the Korean Society of Abdominal Radiology

Interventional Radiology Center

nterventional radiology is a medical area in which imaging technology is used for not only examinations and interpretations but also 'treatment'. Intervention takes advantage of minimally invasive practices for treatment. Typically, a small hole is made on the skin so that catheters or medical needles can penetrate into the body for direct monitoring of target organs during the treatment.

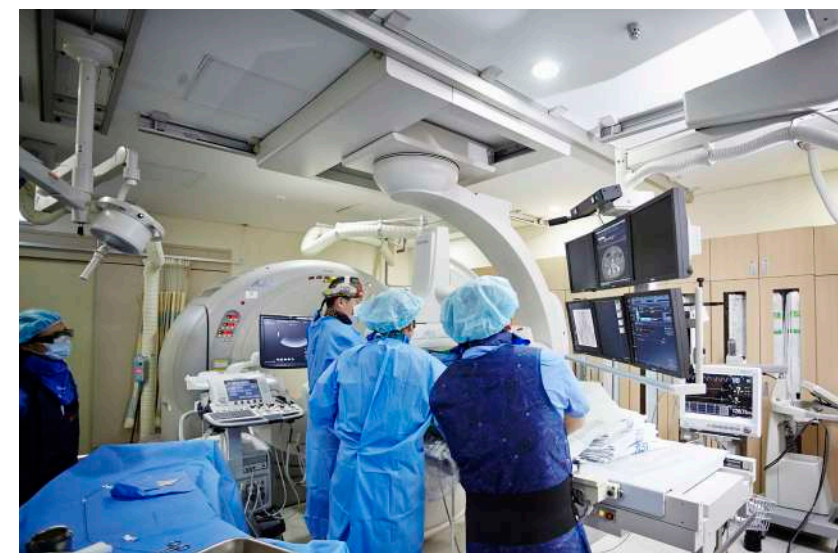
This can lead to treatment outcomes which were available to surgical procedures only and patients can benefit from relatively safer treatment without the risk of surgeries where they cannot bear those surgical procedures. In addition, it can also cure patients with diseases that may be treated by other internal medicine and surgical practices. As it uses minimally invasive practices, patients experience less bleeding and pain with increased safety and reduced physical burden leading to faster recovery and increased quality of life for patients.

Interventional Radiology Center has introduced the most advanced medical equipment called IVR-CT that combines angiography (medical imaging technique to visualize lumen of blood vessels) and MSCT (multi-slice computer tomography) to deliver faster and more accurate examination and treatment outcomes. The center has also secured its medical team consisting of medical specialists with sufficient clinical experience in their own areas together with the most advanced examination equipment to ensure the best and the most effective treatment outcomes.

Examination and Treatment

ET (endovascular treatment,) chemoembolization and high frequency cauterization against tumors, cryotherapy, photodynamic therapy, angioplasty, transcatheter embolization, etc.

Department of Radiology and Oncology, Department of Interventional Radiology, Department of Surgical Oncology, Department of Radiology, Immunity Clinic, Department of Pathology, Department of Nuclear Medicine



MEDICAL TEAM

Nuclear Medicine

Specialized Areas
nuclear medicine in oncology, radionuclide therapy, molecular imaging



Lee Si-nae
Doctor of Nuclear Medicine

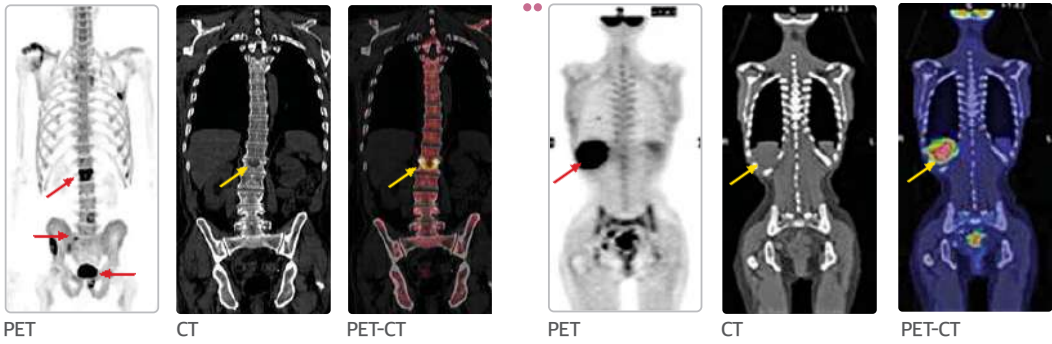
Educational Background	graduated from College of Medicine, Korea University, obtained master's and doctor's degrees at School of Medicine, Korea University
Work Experience	working as a doctor of nuclear medicine of G SAM Hospital, served as a full-time doctor of nuclear medicine of Korea University Guro Hospital, studied of the Department of Medicine, University of Hong Kong: Croucher Summer Course 2014 Advances in Immunology in Health and Disease, resident in nuclear medicine at Korea University Guro Hospital, internship at Korea University Guro Hospital, special license for the radioisotope handling, Fellow of the Asian Nuclear Medicine Board
Professional Activities	full member of the Korean Society of Nuclear Medicine and the Korean Cancer Association, member of the Society of Nuclear Medicine and Molecular Imaging (SNMMI), full member of the Asia Oceania Federation of Nuclear Medicine and Biology (AOF-NMB)
Awards	award for excellent academic achievement by medical specialists at College of Medicine, Korea University 2011, Travel Grant: Croucher Summer Course by College of Medicine, Korea University 2014, 2015 NOVARTIS Merit Award by the Korean Cancer Association, 2015 Travel Award: 11th Asia Oceania Congress of Nuclear Medicine and Biology

Nuclear Medicine Center

Nuclear medicine is a specialized medical area that uses radiopharmaceuticals for diagnosis, evaluation and treatment of anatomical and physiological conditions of human body. Nuclear Medicine Center takes advantage of useful radioactive isotopes to provide radiological, clinical sampling and isotope therapies while visualizing biochemical reactions in human body through the most advanced nuclear medicine and radiological equipment such as PET CT and gamma cameras for early and accurate diagnosis of various cancers and determination of treatment processes.

- Features
- Medical center specialized in various examinations and treatment based on radioactive isotopes
 - Treatment by medical specialists in nuclear medicine who have passed ANMB (Asian Nuclear Medicine Board) examination with global recognition
 - Radioiodine therapy for patients with thyroid cancer
 - Improved quality in diagnosis and treatment through the most advanced nuclear medicine equipment such as PET CT and gamma cameras

- patients with spinal tumor
- patients with Breast Cancer



PET-CT(Positron Emission Tomography)

